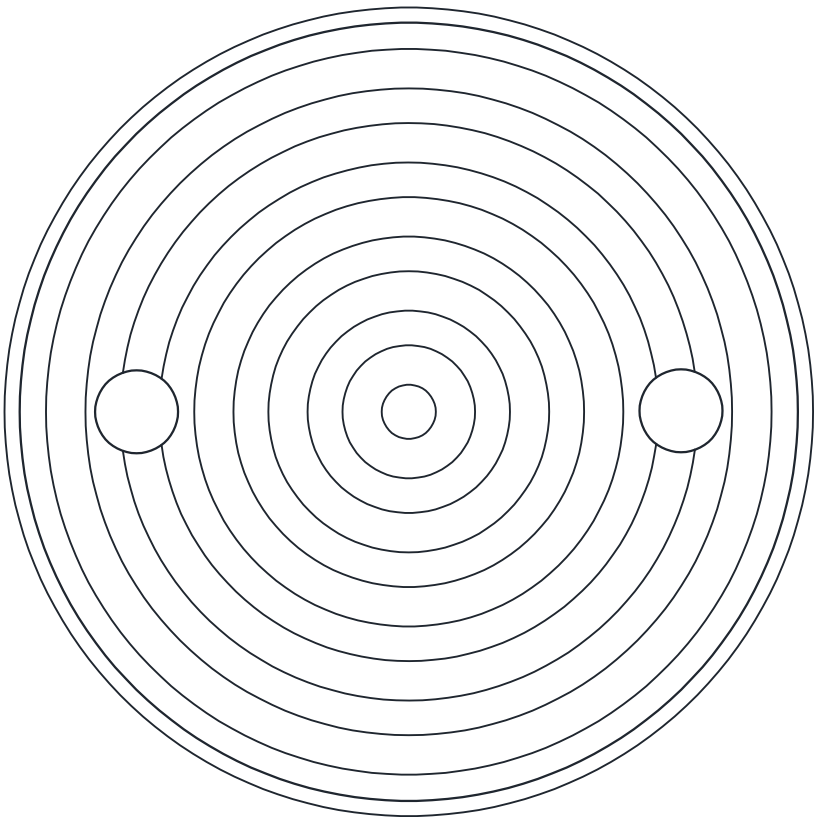


METABRONZE 100mm Round Rodding Eye

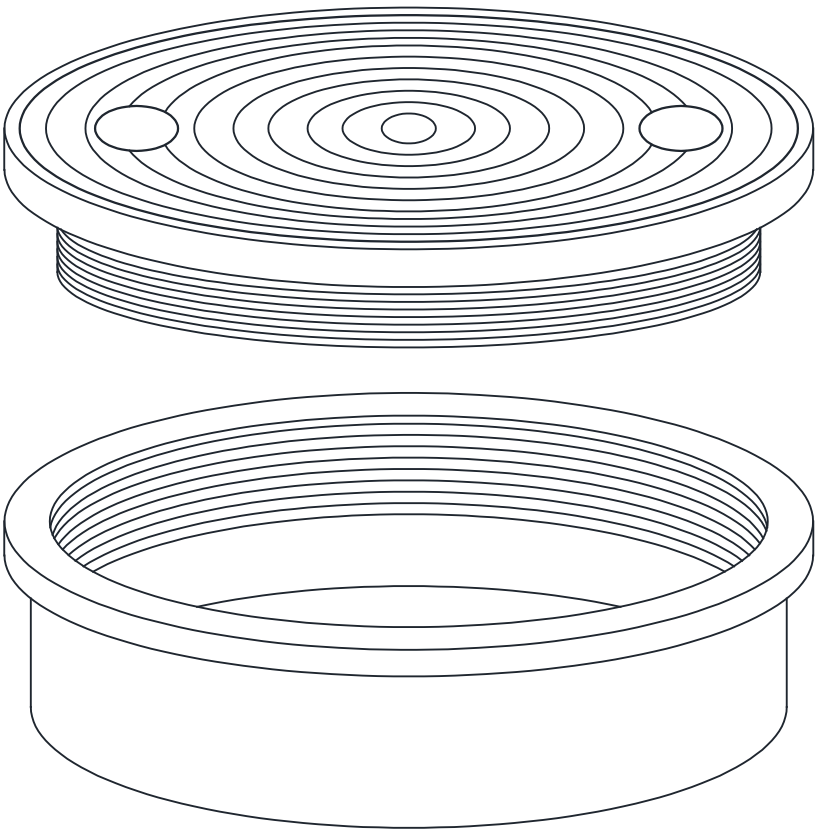
Specification Code:
CE661 (Bronze Non-slip Grooved Finish)

- Non-slip grooves on lid surface.
- Flat lid surface also available.
- Lid Turning Key available, use code CE663.

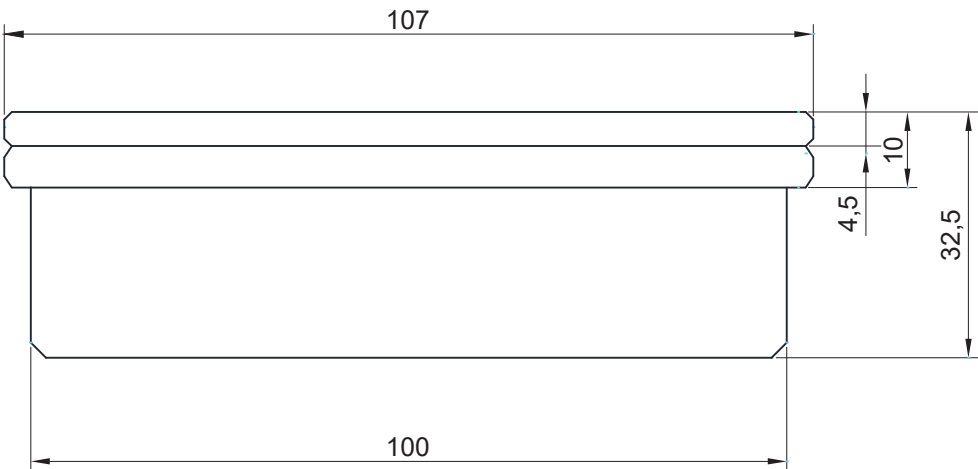


TOP VIEW

- Heavy-duty Rodding Eye in cast-machined LG2 Bronze.
- Screw on lid.
- Body fits inside 100mm pipe.



EXPLODED VIEW



(Due to the casting process actual measurements may vary from the measurements detailed within drawing.)